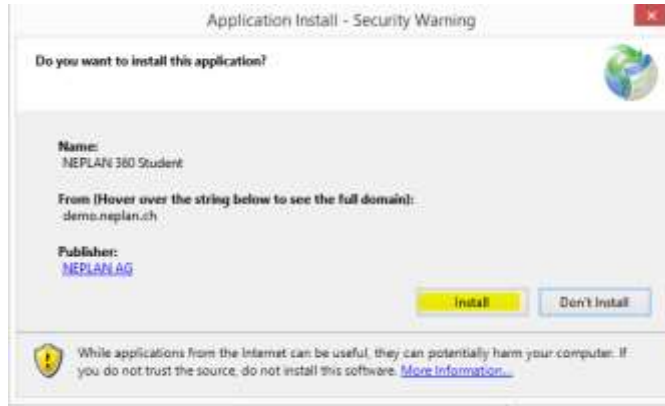
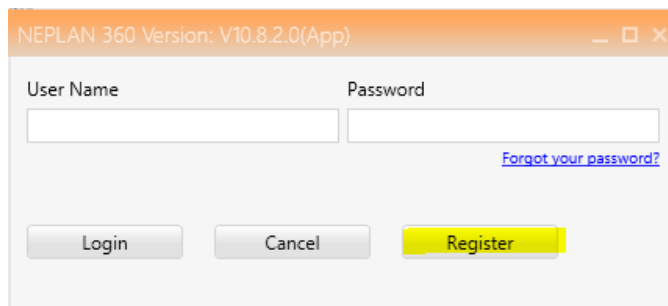


Procedure to install NEPLAN Demo or Student - Version

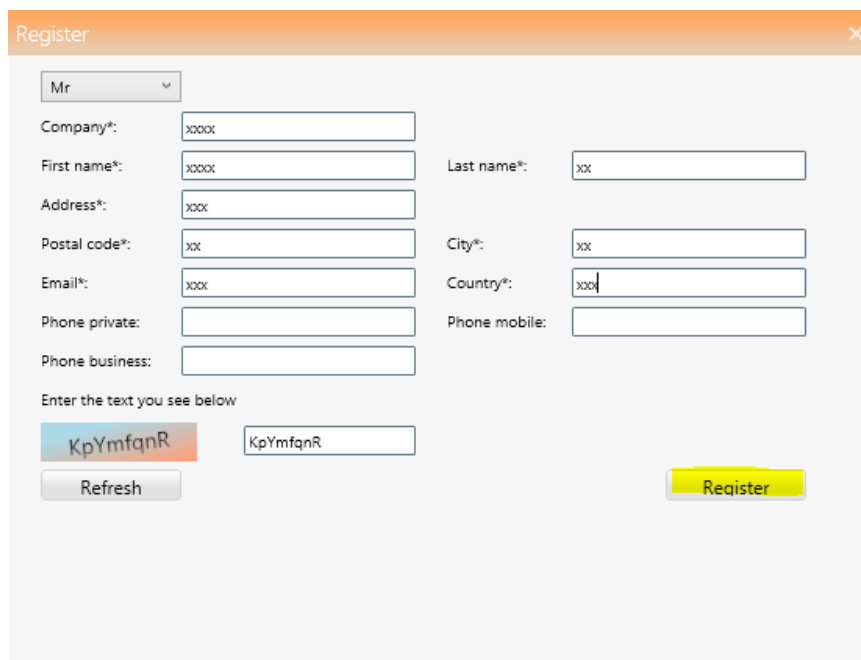
1. Install the NEPLAN App



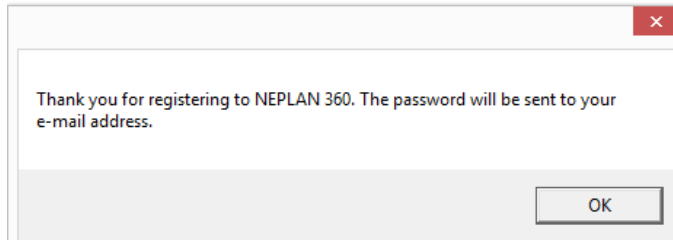
2. The login dialog will appear, click on register to get login and password



3. Register yourself and click button register



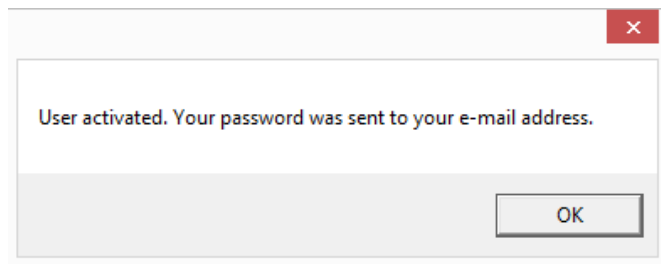
4. You will get an Email to activate the licence



5. Click on the link on your Email you have got by NEPLAN to activate the license



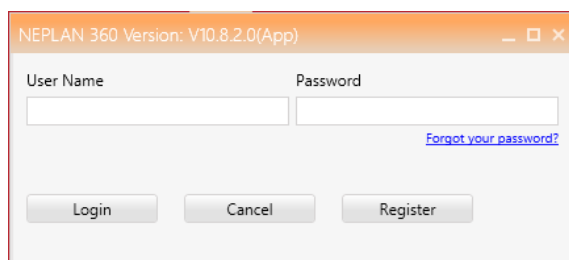
6. After clicking the link you will get per Email your login and password



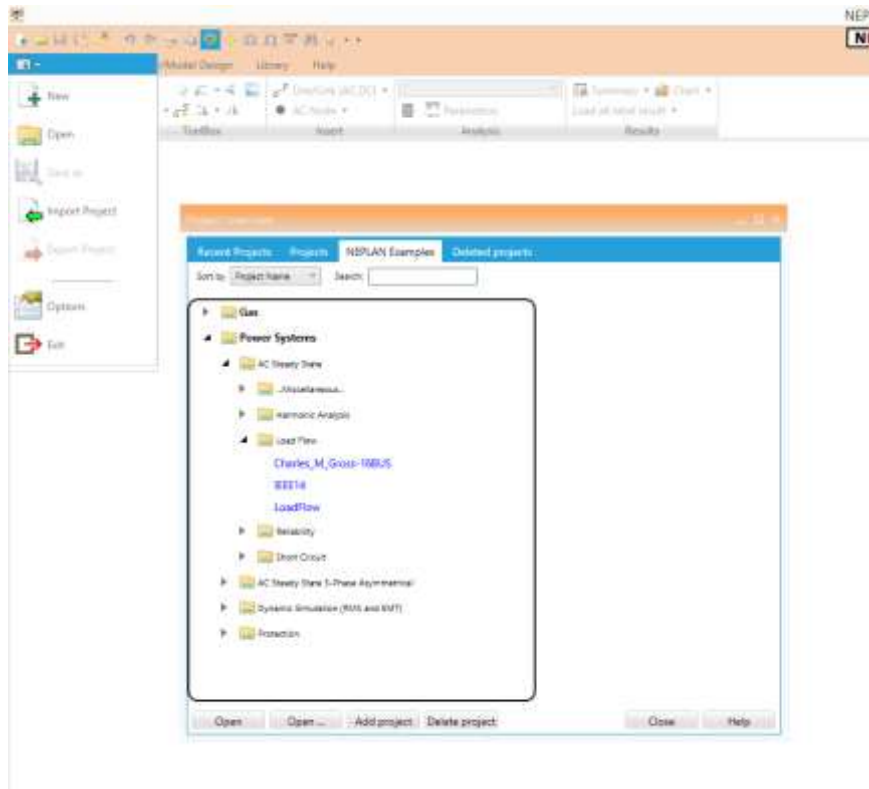
7. You have got an Email with your login



8. Insert the User name and Password you have got per Email in this dialog (same as in item 2)



9. NEPLAN Demo could be used (e.g. open examples):



10. Re-open NEPLAN by clicking the Icon on your desktop. This App has been installed on your desktop under item 1.

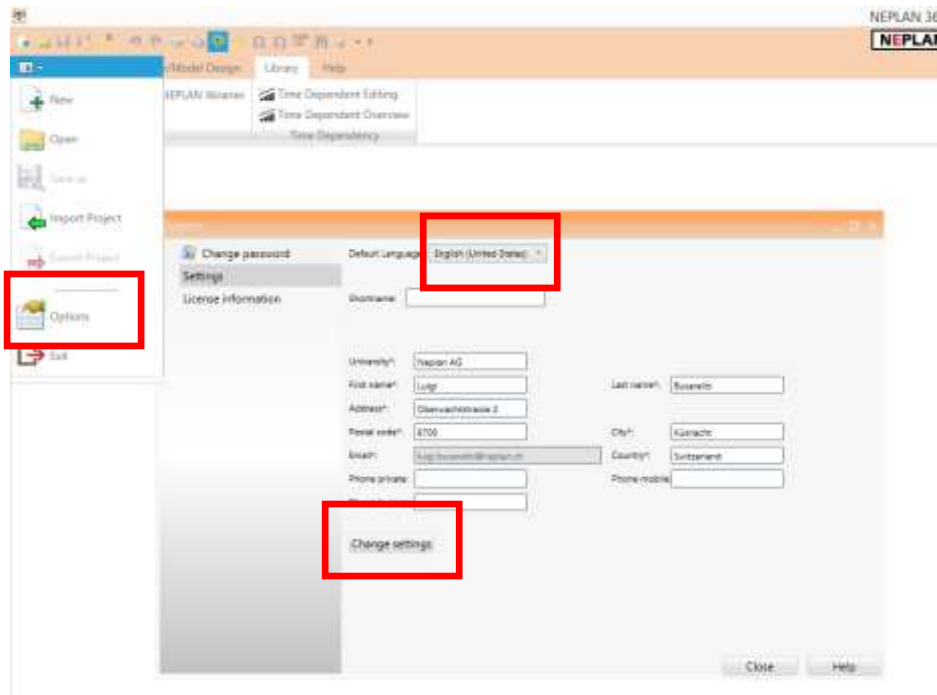


11. You are able to install the NEPLAN App on another Desktop by opening this link

https://demo.neplan.ch/neplan360_student/NeplanAppSetup/NeplanApp.application

12. The language could be changed as follows:

- a) Select Options
- b) Select Language
- c) Click on „Change setting“
- d) Re-open NEPLAN



13. Select help to get Tutorial and Limitations

