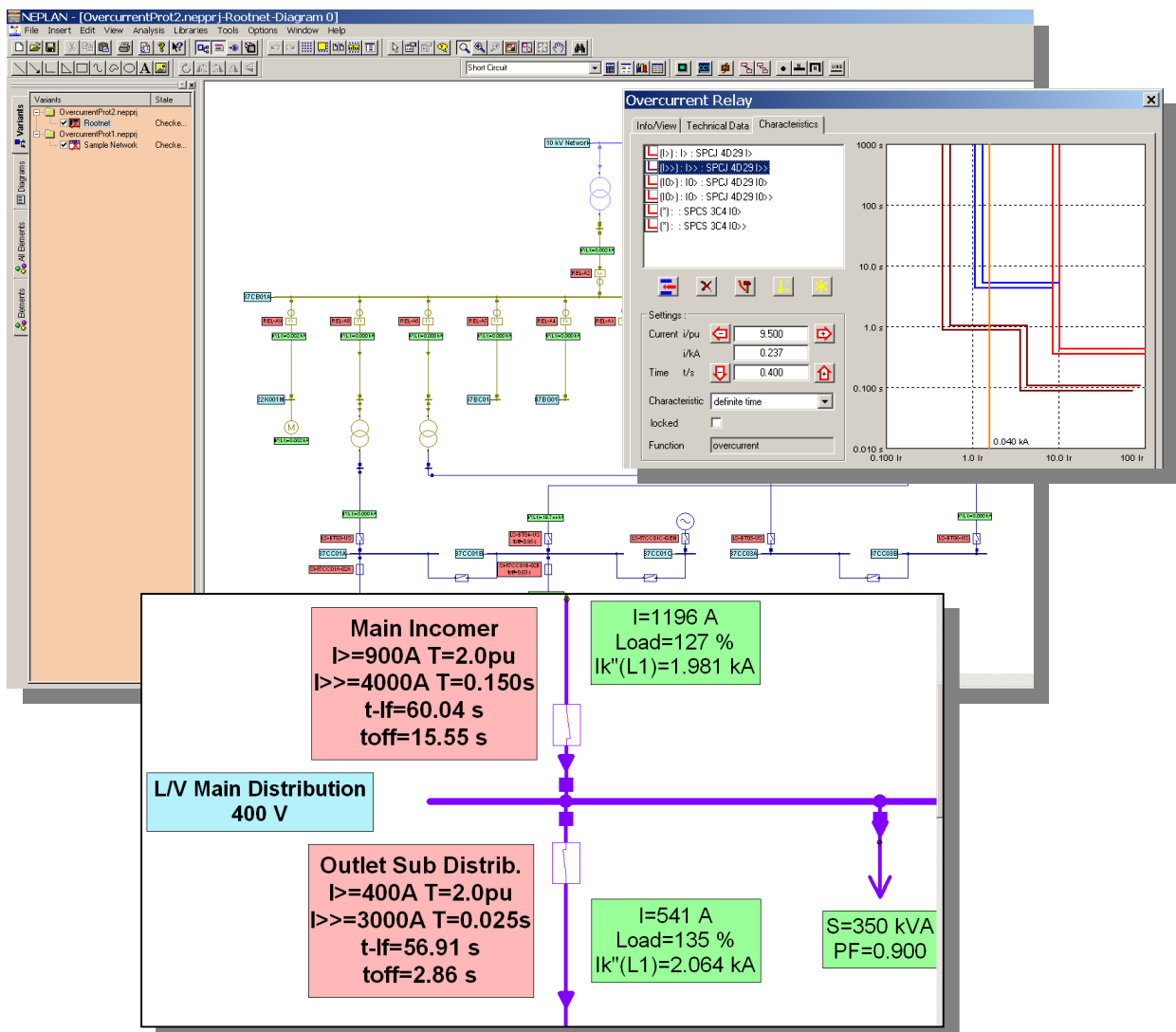


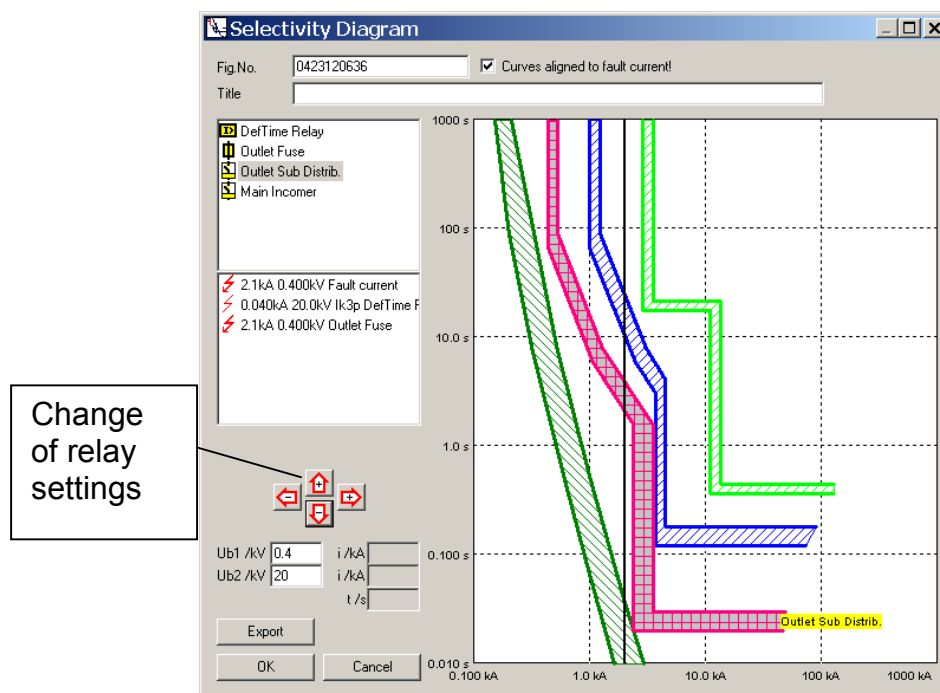
General Characteristics

- All types of protective devices with a current-time characteristic can be entered: fuses, circuit-breakers, definite-time and inverse-time over-current relays, electronic relays.
- Several protective functions can be assigned to each protective device: non-directional or directional over-current and earth-fault protection).
- Exact modeling of setting ranges
- Extensive libraries with protective devices from a variety of manufacturers are available, and can be extended at will.
- Option for entering user-defined characteristics for simulating motor start-ups or thermal capability of conductors, transformers, etc.
- Characteristic can be shifted using a k-factor (inverse-time relay).
- Entry options for characteristics: point-by-point or formula in conformity with IEC or IEEE/ANSI.
- Simulation of fault clearing procedure in meshed networks, involves also distance protection.



Selectivity Diagram

- Protection device and current transformers are positioned in the network plan graphically.
- Automatic generation of selectivity diagrams based on s/c calculation
- Unrestricted number of characteristics can be incorporated in one diagram.
- Changing the relay settings directly in the selectivity diagram
- Unrestricted number of diagrams can be processed simultaneously.
- Selectivity analysis over more than one voltage level and independently of the network type and size involved.
- Two reference voltages for diagrams can be user-defined.
- Individualized coloring of the characteristics.
- No limit on number of diagrams and protective numbers for management.
- Export of complete diagram to Word etc. by clipboard or emf-files



Transferring Current Values

- Direct connection from short-circuit current and load flow module for transferring the currents.
- Unrestricted number of currents can be transferred into one diagram.
- Import/export functions.

Protection Libraries

NEPLAN offers extensive libraries with most used relays-, circuit breaker - and fuse-types. The libraries are constantly updated and extended. It will be handed out for free at the moment of a NEPLAN software purchase or can be downloaded anytime from the Internet by users with a valid maintenance contract.